

# DMS 192

DSLAM simulator for testing ADSL2plus, SHDSL and VDSL2 CPE's up to 192 ports

## Reference DSLAM emulator for testing CPE devices.

A cost effective solution for production grade and software interoperability testing, up to a maximum of 48 simultaneous CPE devices per blade.



The DMS supports 3 types of blades: a 24 port VDSL2 blade, a 48 port ADSL2plus blade and a 32 port SHDSL blade. A total of 4 blades per DMS chassis can be installed.

The DMS unit is a stand-alone device, including controller and PC interface for automated testing and integration with the Multi-Channel Line Test-platform (MLT 24) or the Automatic Switching Module (ASM 525).

When combined with the MLT 24, it is the perfect solution for testing up to 24 CPE's. By connecting 8 MLT 24 units to the DMS, the maximum capacity of 192 ADSL2plus ports can be utilized.

### APPLICATIONS

- ADSL - RE-ADSL - ADSL2
- ADSL2plus
- VDSL - VDSL2
- VDSL & ADSL over POTS
- SDSL - SHDSL

### SYNCHRONISATION TESTS

The DMS allows CPE manufacturers running tens to hundreds of CPE green-LED-synchronisation tests simultaneously, for fast and adequate gabarit testing, before packaging.

### BIT RATE TESTS

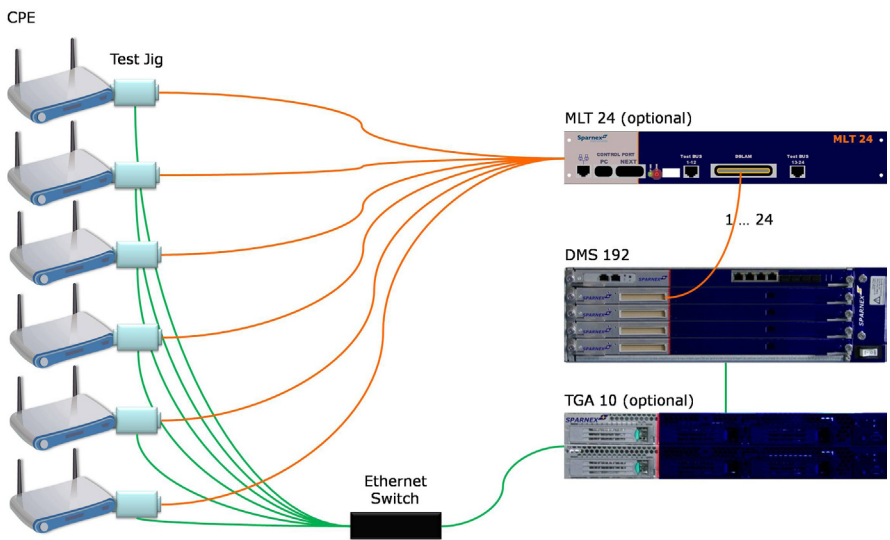
Bit rate can be displayed for each CPE, as well as SNR, INP end profile.

### BARCODE READER & PRINTER INTERFACE

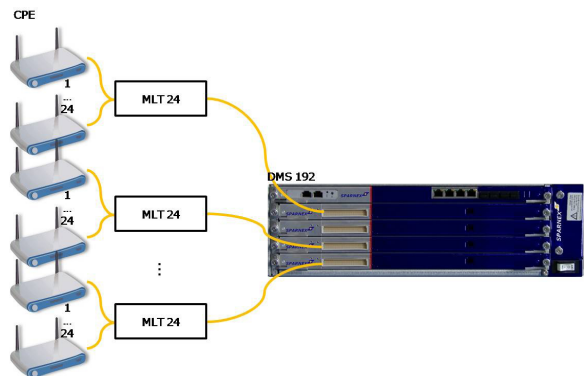
Every test bench can be equipped with Barcode Reader & Printer. Test results can be stored along with the associated CPE Serial Number, this allows for registration of performance parameters in the Acceptance Test and Service Administration System (ATSAS) database (optional).

### TRAFFIC GENERATOR

The DMS can be combined with the TGA 10 Traffic Generator via a 10/100 Base-T Ethernet port connection.



It is possible to expand the DMS, which makes the DMS very suitable for large volume production testing.



# DMS 192

DSLAM simulator for testing ADSL2plus, SHDSL and VDSL2 CPE's up to 192 ports



## SPECIFICATIONS

|  |   |
|--|---|
| • Supported DSL Blades - up to 4:          | - ADSL2plus: 48 ports / blade<br>- SHDSL: 32 ports / blade<br>- VDSL2: 24 ports / blade   |
| • Maximum number of ports per DMS chassis: | - ADSL2plus: 192 ports<br>- SHDSL: 128 ports<br>- VDSL2: 96 ports   |
| • Maximum DC voltage at ports:             | - Any wire to ground 200V<br>- Between wires 400V   |
| • Control Interface                        | RS-232, Ethernet  |
| • I/O                                      | TELCO 50 connector  |
| • Controlled by                            | ICL-server for automation of DSL physical layer tests   |
| • Possible to integrate other features     | ANG 2005 Noise Generator  |
| • Compatible with                          | - Noise Creation Software (NCS)<br>- LSX programmable line simulator hardware<br>- Copper Network Builder user interface (CNB)<br>- CNB and Noise Browser Software (NBS) Integrated (CNI) |
| • Format                                   | 19" rack-mountable chassis - 6 U format   |
| • Size                                     | 185mm (7.3") x 490mm (19.3") x 495mm (19.5") H x W x D  |
| • Weight                                   | 16,6kg (36 lbs)   |
| • Environment                              | - Storing conditions: -20°C - +70°C<br>- Operational conditions: 10°C - + 25°C<br>- Humidity: 90% max. non-condensing   |
| • Mains Voltage                            | 230V AC +10%/-10%<br>115V AC +15%/-6%<br>Freq.: 47-63Hz   |

## ORDER INFORMATION

|                         |            |
|-------------------------|------------|
| DMS Controller/Chassis: | 91.52.3192 |
| DMS - ADSL2plus:        | 91.52.8011 |
| DMS - SHDSL:            | 91.52.8010 |
| DMS - VDSL2:            | 91.52.8012 |